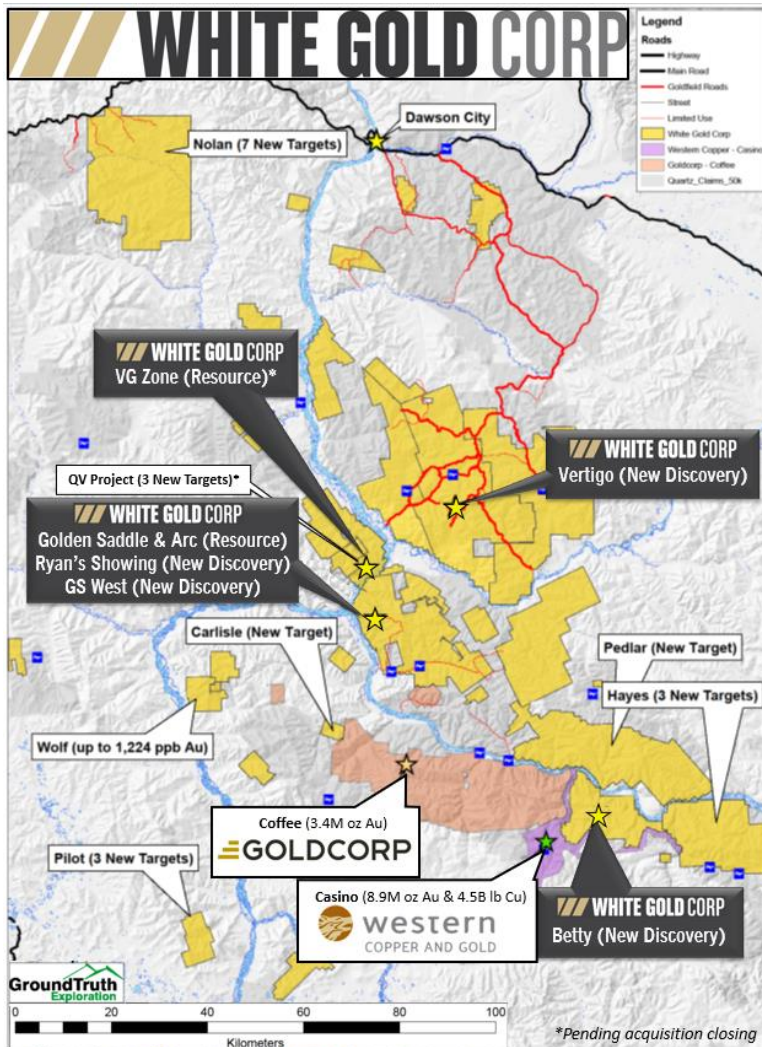


## LEADING THE NEW GOLD RUSH

### COMPANY OVERVIEW

- **Largest** landholder of the Yukon's White Gold District, owning over **40% of all claims**.
- Portfolio of 22,040 quartz claims across 35 properties covering over 439,000 hectares.
- Flagship Golden Saddle resource has **961k Indicated** and **282.5k Inferred oz** of high-grade gold.
- Newly acquired VG Zone resource has **230k Inferred oz** at cut-off of 0.5 g/t.
- **Multiple** new high-grade discoveries in 2018.

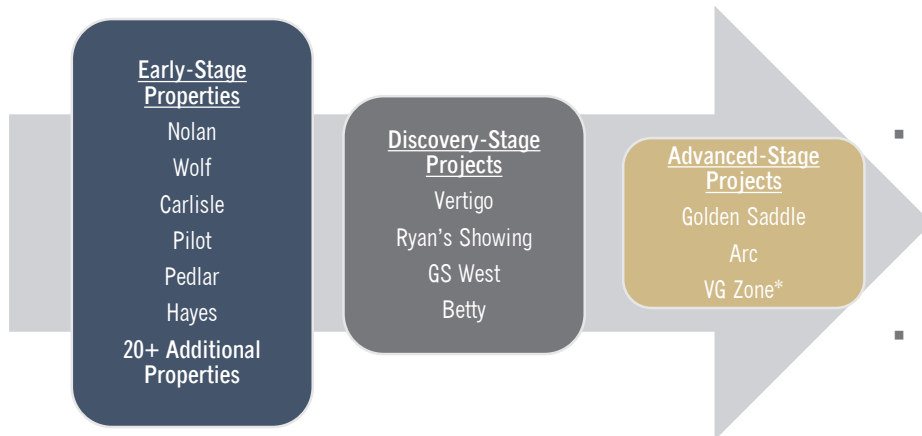


**40%** Of White Gold District



- Mining friendly jurisdiction
- Large land package
- World renowned team
- Strategic partners
- Existing assets
- Cutting edge technology
- Exciting exploration pipeline

## EXPLORATION PIPELINE



## THE OPPORTUNITY

- District made famous by Klondike gold rush of 1896.
- Over 7M oz discovered since 2007, including properties acquired by Goldcorp and Kinross (now owned by White Gold Corp).
- Historically underexplored region.

## WORLD CLASS TEAM

- Members of White Gold management & exploration teams have been involved in **every major discovery** in the White Gold District.
- Shawn Ryan, *Chief Technical Advisor*
- Jodie Gibson, P.Geo., *VP Exploration*
- Robert Carpenter, *Director*
- David D'Onofrio, CPA, *CEO*

## CAPITAL INFORMATION

Issued and Outstanding Shares	111.3M
Warrants	14.6M
Options	5.6M
Insider Ownership	61.4%

## DISCOVERIES IN 2018

- **Vertigo target**
  - JP Ross property.
  - Drilling results include:
    - **103.9 g/t Au over 1.52m**
    - **59.30 g/t Au over 3.05m**
    - **Open in all directions**
- **Ryan's Showing target**
  - 2km west of Golden Saddle resource.
  - Drilling results include:
    - **20.64 g/t Au over 6.09m**
    - **5.02 g/t Au over 13.17m**
    - **Open in all directions**
- **GS West target**
  - 0.75km west of Golden Saddle resource.
  - Drilling results include:
    - **2.97 g/t Au over 10.00m**
    - **1.92 g/t Au over 24.00m**
    - **Open at depth**
- **Betty target**
  - Along trend with Coffee Creek fault line
  - Drilling results include:
    - **1.08 g/t Au over 50.29m**
    - **Oxidized mineralization**



\*Pending acquisition closing

## STRATEGIC PARTNERS

