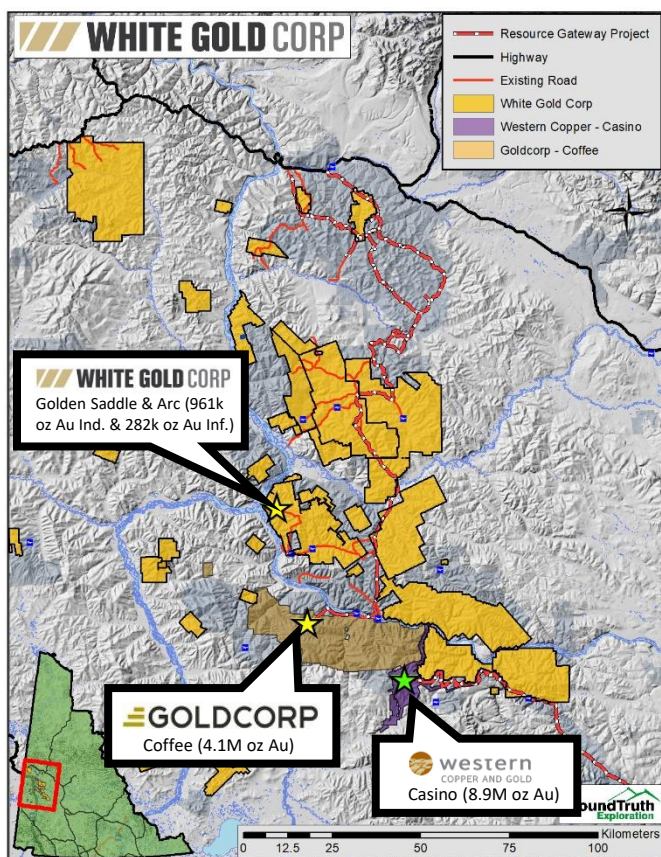


LEADING THE NEW GOLD RUSH

COMPANY OVERVIEW

- **Largest** landholder of the Yukon's White Gold District, owning over **40% of all claims**.
- Portfolio of 21,218 quartz claims across 34 properties covering over 423,000 hectares.
- Flagship Golden Saddle resource has **961k Indicated** and **282.5k Inferred** ounces of high-grade gold.
- **Multiple** new high-grade discoveries in 2018.

40% Of White Gold District



- Stable, mining friendly jurisdiction
- Large land package
- World renowned team
- Strategic partners
- Existing assets
- Cutting edge technology
- Exciting exploration pipeline

EXPLORATION PIPELINE

Early-Stage Properties

Nolan
Wolf
Carlisle
Pilot
Betty
Pedlar
Hayes

20+ Additional Properties

Discovery-Stage Projects

Vertigo
Ryan's Showing
GS West

Advanced-Stage Projects

Golden Saddle
Arc

DISCOVERIES IN 2018

- **Vertigo target**
 - JP Ross property.
 - Drilling results include:
 - **59.3 g/t Au over 3.05m**
 - **23.44 g/t Au over 24.38m**
 - **Open in all directions**
- **Ryan's Showing target**
 - 2km west of Golden Saddle resource.
 - Drilling results include:
 - **20.64 g/t Au over 6.1m**
 - **5.02 g/t Au over 13.2m**
 - **Open in all directions**
- **GS West target**
 - 0.75km west of Golden Saddle resource.
 - Drilling results include:
 - **2.97 g/t Au over 10m**
 - **1.92 g/t Au over 24m**
 - **Open at depth**

THE OPPORTUNITY

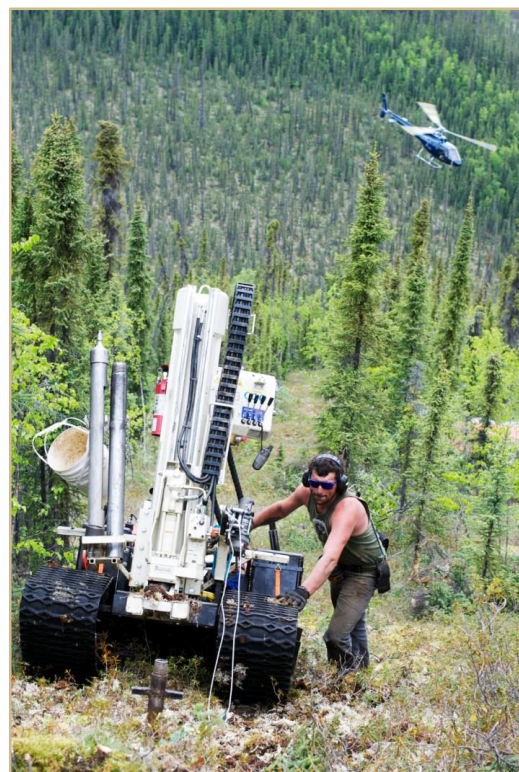
- District made famous by Klondike gold rush of 1896.
- Over 7M oz discovered since 2007, including properties acquired by Goldcorp and Kinross (now owned by White Gold Corp).
- Historically underexplored region.

WORLD CLASS TEAM

- Members of White Gold management & exploration teams have been involved in **every major discovery** in the White Gold District.
- Shawn Ryan, *Chief Technical Advisor*
- Jodie Gibson, P.Geo., *VP Exploration*
- Robert Carpenter, *Director*
- David D'Onofrio, *CEO*
- David Schmidt, *CFO*

CAPITAL INFORMATION

Issued and Outstanding Shares	108.5M
Warrants	15.2M
Options	5.6M
Insider Ownership	63.5%



STRATEGIC PARTNERS

